



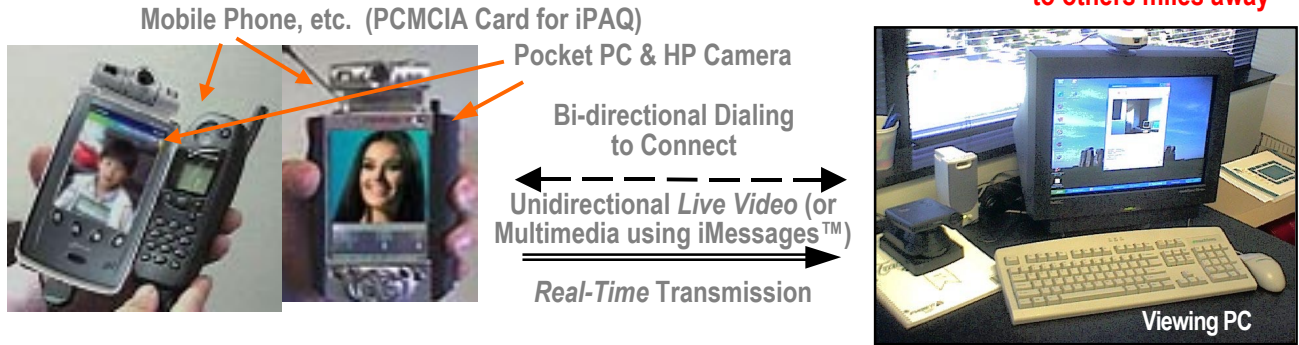
**Support of HP Pocket Camera (F1869A) on iPAQ Pocket PC from NEW HP**  
**Introducing mmVISION mmCOMM™ Software**

**mmVISION iPictures & iVideo:**  
**Talking-Picture™ Video Camera**

**The First and Only  
 in the World!**

**“The World in SECONDS”**  
**mmVISION iMessages™:**  
**Instant Multimedia Postcards**

**“Mobile-Eye on the World™”**  
**mmVISION iView™ Software:**  
**Live-Video & Instant-TelePhotos**  
**to others miles away**



**Introducing MediaMotion/mmVISION’s powerful mmCOMM software suite:**

**Breakthrough 2G/2.5G/3G/802.11 W-LAN mobile multimedia ‘killer’ applications for law enforcement, health care, security, disaster relief, insurance, real estate, transportation, energy, construction, travel, news media, consumers, etc.**

□ **As a Digital Still Picture Camera**

**iPictures™** captures **many THOUSANDS of VGA (640x480 pixels) Talking-Pictures™** (compared to hundreds of other’s image-with-NO-Audio of non-HP cameras because of inability to do wavelet video compression) using leading-edge, high-quality and high-ratio wavelet image compression.

**iMessages™** allows you to capture photos and edit high-quality **multimedia postcard™** or slide-shows (VGA-size pictures, audio, text, and color hand-drawings) in small files, that you can send in seconds to others real-time via cell-phone (“The World in SECONDS™”).

□ **As a Digital Video Camcorder**

**iVideo™** captures **hour(s) of video** (compared to SECONDS of others’ video capture of non-HP cameras because of inability to do wavelet compression) using advanced motion-wavelet video compression (convertible to AVI format), allowing simultaneous capture and compression of audio/video scenes into a removable CF storage card.

□ **As a “Mobile-Eye On the World™”**

**The First and Only  
 in the World!**

**iView™** One-Way Live Video --- between mobile iPAQ / Jornada Pocket PC (with a HP Pocket Camera and a cell-phone), and a Windows PC.

**InstantTelePhoto™:** (1) Viewing PC user can capture in SECONDS high quality VGA remote-telephotos (of anything he sees) in the live-video (from iPAQ/Jornada). (2) Pocket PC user can send in SECONDS HP-Pocket-Camera-captured VGA-size pictures (*literally from his palm*) wirelessly (to Viewing PC).

Software	Software “Value”	“Discount” From Software Value	(Limited Time) Intro Price
mmVISION iPictures & iVideo software	\$99.98	75%	\$24.98
mmVISION iMessages software	\$99.98	60%	\$39.98
mmVISION iView software	\$149.98	60%	\$59.98

**Mobile Multimedia Communication --- Anytime, Anywhere, Anyhow™!**



**Support of HP Pocket Camera (F1869A) on iPAQ Pocket PC from NEW HP**  
**Introducing mmVISION mmCOMM™ Software**

**“Mobile-Eye on the World™”**  
**mmVISION iView™ Software:**  
**Live-Video & Instant-TelePhotos**  
**to others miles away**

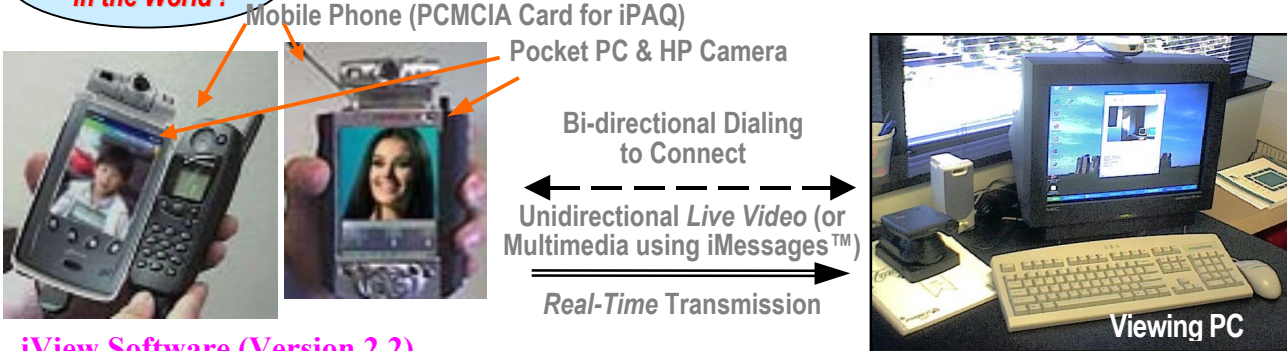
**The First and Only**  
**in the World !**

Your mmVISION iView™ allows you to have a “Mobile-Eye on the World™”: **mobile live-video / Instant-TelePhoto™ in SECONDS**, on iPAQ / Jornada Pocket PC (with HP Pocket Camera) and mobile network. mmVISION iView™ uses leading-edge proprietary real-time high-quality, high-compression-ratio Wavelet image and video compression technology, which result in small file sizes. The current version is specially optimized for iPAQ and Jornada Pocket PCs for enhanced performance.

**The First and Only**  
**in the World !**

**“Mobile-Eye on the World™”**  
**mmVISION iView™ Software**  
**Mobile Multimedia Communication**  
**--- Anytime, Anywhere, Anyhow™ !**

**Live-Video & Instant-TelePhotos**  
**to others miles away**



**iView Software (Version 2.2)**

- **Mobile-Eye on the World™:** *Anytime, anywhere live-video, from Pocket PCs in the palm of your hand, can now be viewed in real-time by others miles away, using mmVISION’s technology-breakthroughs in mobile-multimedia performance & bandwidth requirement.*
- **Remote InstantTelePhotos™:** (1) Viewing PC user can capture in **SECONDS** up-to 640x480 high quality remote-telephotos (of anything he sees) in the live-video (from Pocket PCs). (2) Pocket PC user can send in **SECONDS** Pocket-Camera-captured photo-quality pictures (literally from his palm) wirelessly (to Viewing PC).
- **Two Ways to Connect:** (1) Point-to-Point Direct Dialing Mode - Results in best performance due to higher data rates and avoiding Internet delay. (2) Internet or W-LAN Mode - Lower cost for long-distance usage.

**Pocket Camera Control:** Quality, HP Camera control (Gain, Shutter-Speed, White Balance) and size (up-to VGA) of captured pictures and videos.

**Illustration of iView™ Software Feature: Live-Video - from Pocket PC to Windows PC**

To illustrate iView *Anytime, Anywhere live-video, from Pocket PCs in the palm of your hand, to others in real-time*, the following are extracted text and screens from iView Quick User Guide:



Illus. For (6): When connected, iView allow you to have a “Mobile-Eye on the World™”.

- (6) mmVISION iView will now allow you to have a “Mobile-Eye on the World™”:
- (a) *Anytime, anywhere live-video, from the Pocket PC in the palm of your hand, to be viewed by others in real-time.*
  - (b) Remote **InstantTelePhoto™**.



# Support of HP Pocket Camera (F1869A) on iPAQ Pocket PC from NEW HP

## Introducing mmVISION mmCOMM™ Software

The First and Only  
in the World!

“Mobile-Eye on the World™”  
mmVISION iView™ Software:  
Live-Video & Instant-TelePhotos  
to others miles away

### Illustration of iView™ Software Feature: InstantTelePhoto™:

To illustrate your Windows PC viewer capturing and viewing a VGA-size (640x480) InstantTelePhoto™ (of what he sees in the live-video from your iView PPC) wirelessly in real-time and in SECONDS, the following are extracted text and screens from iView Quick User Guide:

(2) To capture an InstantTelePhoto™ of what he sees in the live-video (from your iView PPC), your viewer would click the “Take Picture” button on the “Remote Capture Control” dialog-box to capture remote-InstantTelePhoto™ (using your iView Pocket PC’s HP Pocket Camera).

Mobile Phone (PCMCIA Card for iPAQ)

Live-Video & Instant-TelePhotos to others miles away



Pocket PC & HP Camera

“Mobile-Eye on the World™”  
mmVISION iView™ Software

Unidirectional InstantTelePhoto™

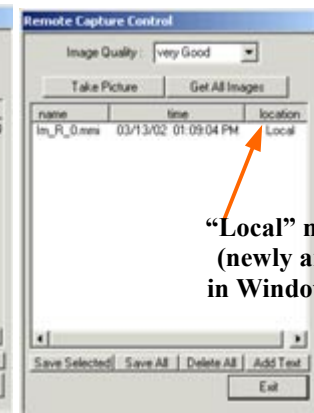
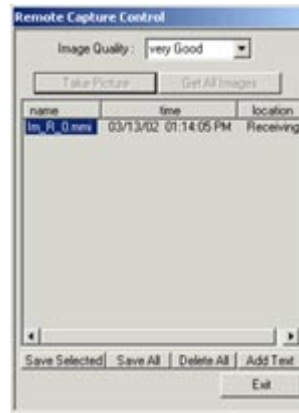
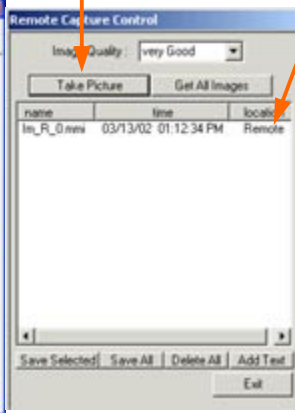
live video Real-Time Transmission

“Remote” mmi file  
(saved in Pocket PC)



Viewing PC

“Take Picture” button



“Local” mmi file  
(newly arrived  
in Windows PC)

Illus. for (2): Click “Take Picture” button to capture InstantTelePhoto™ (saved in Pocket PC). Click “Remote” mmi file.

.. to start transfer. In SECONDS. InstantTelePhoto™ appear as “Local” mmi file (in Windows PC). Click newly arrived mmi file.

(7) Your iView Windows PC viewer may then double-click the newly arrived mmi file to view the InstantTelePhoto™ he captured ! Please note the actual VGA image is SIXTEEN times the size below.



Instant-TelePhotos  
to others miles away

Actual VGA (640x480)  
InstantTelePhoto is 16  
times this size.

Illus. for (7): Click to view the 640x480 VGA InstantTelePhoto™ he captured ! Please note the actual VGA image is SIXTEEN times the above size.



# Support of HP Pocket Camera (F1869A) on iPAQ Pocket PC from NEW HP

## Introducing mmVISION mmCOMM™ Software

*The First and Only  
in the World!*

**“Mobile-Eye on the World™”  
mmVISION iView™ Software:  
Live-Video & Instant-TelePhotos  
to others miles away**

### Contents Page of 51-Page iPictures & iVideo Quick Start Guide:

- Section 1.1. How to install your mmVISION iView™ Software
- Section 1.2. Adjusting Your HP Pocket Camera’s Shutter Speed, Gain, and White Balance
- Section 1.3. First Time Use ActiveSync to Experience iView™ Live-Video and InstantTelePhoto™
- Section 2. How to connect Your iView™ Software – from Your Pocket PC to Your Windows PC
- Section 2.1. Introduction
- Section 2.2. Getting your mmVISION iView™ software Connected (Point-to-Point Direct-Dialing)
- Section 3.1. iView™ Software Feature: Live-Video (from Your Pocket PC) - on Your Windows PC
- Section 3.2. iView™ Software Feature: InstantTelePhoto™ - on Your Windows PC
- Section 3.3. iView™ InstantTelePhoto™ - on Pocket PC: Captured by YOU at PPC Location
- Section 3.4. iView™ Feature: InstantTelePhoto™ - on Pocket PC: Captured by Windows PC Viewer
- Section 4. How to connect Your iView™ Software on Internet (Pocket PC to Windows PC)
- Section 5.1. How to setup Microsoft Dialup Connection on Windows 2000/XP PC.
- Section 5.2. How to setup Win95/98/98SE/Me Dial-up Server.
- Section 6. Jornada & iPAQ Pocket PC and Windows PC System Requirements
- Section 7. Support of HP Pocket Camera on HP iPAQ Pocket PC (May 7th, 2002)
- Appendix A. HP Pocket Camera for HP iPAQ & Jornada Pocket PCs**
- Appendix B. HP Pocket Camera Tips**

### HP iPAQ & Jornada Pocket PC and Windows PC System Requirements

iView Windows PC:

- (1) Processor Type: Intel Pentium 200 MHz or higher performance CPU for Windows PC.
- (2) RAM: 32 Mbytes (minimum) recommended.
- (3) Operating System: Windows 95/98/98SE/2000/Me/XP on PC.
- (4) Modem Connection: Regular dial-up modem (e.g. 56 kilo-baud) on Windows PC.
- (5) Various Telecom Networks: POTS lines, etc.
- (6) Point-to-Point Direct-Dial iView connection (PPC to Windows PC) is recommended, using Microsoft Windows 95/98/98SE/Me Dialup-Server, or if your iView PC uses Windows 2000/XP, you will need to setup your iView Windows PC's Microsoft Dialup Networking (“Make incoming network connection” feature). Please refer to above for details.

iView Pocket PC:

- (1) Processor Type: Intel StrongArm 206 MHz CPU on HP Jornada 56X family, or iPAQ Pocket PC 36XX / 37XX / 38XX Pocket PC
- (2) RAM: 32 Mbytes (minimum) recommended.
- (3) Operating System: Windows CE 3.0 Pocket PC 2000 or Pocket PC 2002 on Pocket PC
- (4) The following is a PARTIAL list of TESTED telecom devices that are compatible mmVISION iView application:
  - Mobile Phone PCMCIA card: Nokia CardPhone 2.0 (GSM 900/1800) (Need custom CF extender to jack-up HP camera)
  - Sierra Wireless Aircard 510 (CDMA)
  - Sierra Wireless Aircard 555 (3G)
  - CF Bluetooth Card: Symbol Bluetooth Card Wireless Networker
  - Bluetooth Mobile Phone: Ericsson T39 (Tri-band GSM)
  - Mobile Phones: Nokia 51XX/61XX (900/1800/1900)
  - Motorola L2000 (Tri-band)
  - Qualcomm QCP-1960 (CDMA)
- 802.11 W-LAN: HP WL110 Wireless PC Card (Need custom CF extender), WL310 Home Office Gateway  
Symbol Wireless Networker (Need custom CF extender to jack-up HP camera above antenna)
- (5) Various Mobile Telecom Networks: GSM, CDMA, satellite, CDPD, GPRS, 3G network, or POTS lines.
- (6) Point-to-Point Direct-Dial iView connection (iPAQ / Jornada to Windows PC) is recommended.
- (7) A compatible camera is required, e.g. HP Pocket Camera (available worldwide).

Software	Software “Value”	“Discount” From Software Value	(Limited Time) Intro Price
mmVISION iPictures & iVideo software	\$99.98	75%	\$24.98
mmVISION iMessages software	\$99.98	60%	\$39.98
mmVISION iView software	\$149.98	60%	\$59.98